



# Don Elbert McLain

MAY 20, 1955 - JUN 25, 2023



Scan to Visit

# Table of Contents

<b>Obituary</b> .....	Page 3
<b>Events</b> .....	Page 5
<b>Tribute Wall</b> .....	Page 6
<b>Media</b> .....	Page 7



## **Don Elbert McLain**

MAY 20, 1955 - JUN 25, 2023

**D**on was born in Pontiac MI to Kenneth E. McLain and Helen F LaVeque. He passed away at Charter Senior Living in Annapolis MD on June 25, 2023, after a long illness. He lived most of his life on Maybee Rd in Clarkston MI.

Don attended Pontiac Central High School and received an Associate Degree in Business Administration from Oakland Community College. He graduated Magna Cum Laude. Don worked for the West Bloomfield School district for many years as head of the print shop and media supervisor. He won several awards for his work in the print shop and his media contributions to school functions. When he retired from the schools and needing to stay busy went to work for the Kroger Store in Clarkston, MI in their bakery department for several years.

Don was an avid sports fan and followed the Detroit Tigers, Red Wings, and the University of MI teams closely. He also collected coins and participated in the Pontiac Coin Club meetings and shows. Don was an avid music lover and had an extensive collection which he played often. He also loved movies and had an amazing collection of many different types of movies.

He is survived by his siblings Kay Chase (Gerald), Fay Smith (Jim), Kenneth L McLain, Charlotte Lewis (Allen) and nephews Gerald Chase (Jane), Harold (Holly), John (Yukiko) and great niece Madeleine Chase and great nephews Taylor, Leo and Kai Chase. He was preceded in death by his parents and a nephew Matthew Hamberg. He will be missed by all who knew him as a kind, giving and special person.

Visitation will take place at 10am July 17th with service at 12pm at First Missionary Church, 4832 Clintonville Rd, Clarkston, MI 48346.

Interment will be at Springdale Cemetery in Madison, Indiana. July 19th at 11am.

Donations in Don's memory can be made to:  
Hospice of the Chesapeake



## Obituary

---

**Don Elbert McLain**

MAY 20, 1955 - JUN 25, 2023

Anne Arundel County  
90 Ritchie Highway  
Pasadena, MD 21122

Grace Centers of Hope  
35 E Huron Street  
Pontiac, MI 48343



# Events

**Don Elbert McLain**

MAY 20, 1955 - JUN 25, 2023

## Visitation



**Monday**, July 17, 2023



10:00 AM ET



**First Missionary Church**

4832 Clintonville Road, Clarkston MI 48346



## Inurnment



**Wednesday**, July 19, 2023



11:00 AM ET



**Springdale Cemetery**

Madison IN

## Cemetery Details



**Springdale Cemetery**

Madison IN



## Tribute Wall

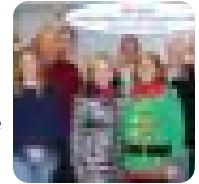
**Don Elbert McLain**

MAY 20, 1955 - JUN 25, 2023



**Andrew Groen** shared a photo to the **Tribute Wall** album.

So sorry to here about Don's passing. He was a great friend and co-worker. We always enjoyed our work holiday gatherings with the "WB Gang". Don will certainly be missed. Rest In Peace friend - Andy



July 4 at 7:06 PM



**Paul Walby** July 15 at 11:48 AM

My prayers go out to all Don's family. It was a joy to have worked with him a WB. I will always remember his humor reference to Mcfly from Back To The Future at work. See you in the future. I will miss you.



**Mary Ellen Trott** July 6 at 7:48 AM

"Those we Love, Live on in our Hearts, in the Memories we Treasure!"God Bless Don's soul. Love & Peace to his family.



**Brenda Camp-Hamilton** July 5 at 6:26 AM

May you forever dance with the angels, Don. You were always so quick with a smile, and tried to make everyone's job easier. Your work here is done but your kindness is not forgotten. Until we meet again .....



**Randy Long** July 5 at 5:22 AM

Prayers 🙏 and Love to Don's family. Don was a friend for 40 yrs. A Great Co-worker at WB DMC print shop! He will be sorely missed from his WB Schools family and as good personal friend, RIP 🙏 Don ❤️



**Andrew Groen** shared a photo to the **Tribute Wall** album.

July 4 at 7:06 PM



2016 WB Gang Memory



# Memories only last if you share them

Join us in honoring Don by contributing to a collection of shared memories.



Scan to Visit